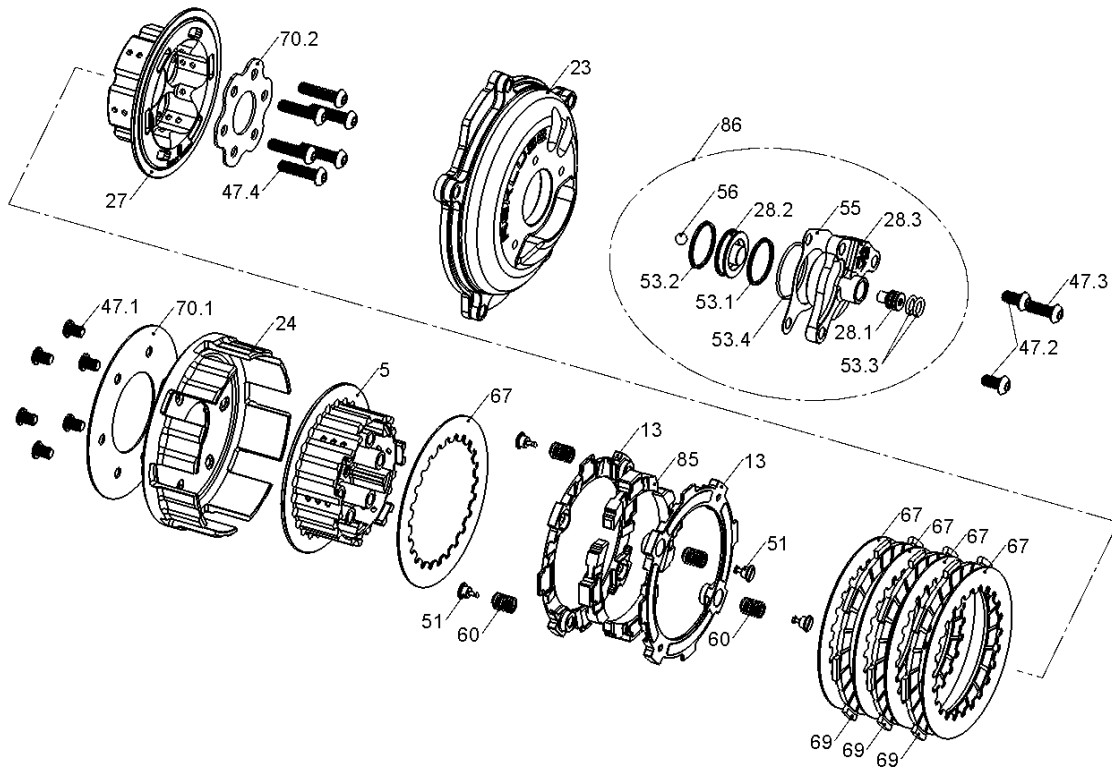


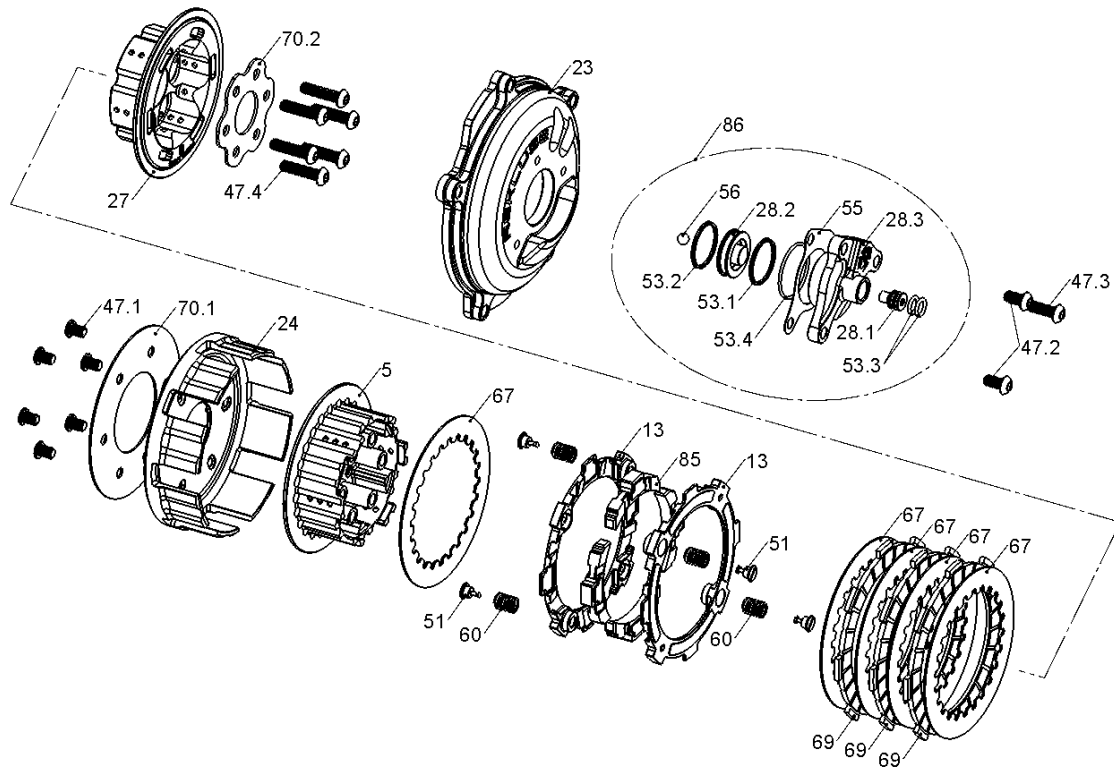
RMS-7790A - CORE EXP CLUTCH 3.0



**Item 95 | 185-100 | Slave cylinder piston installation taper tool (not included with product). This is needed to rebuild the adjustable slave cylinder and re-insert slave cylinder piston.*

Item	Part Number	Item Description	Qty
5	113-021B	PRESSURE PLATE - Core - KTM65	1
13	140-233B	EXP 3.0 BASE - KT65	2
23	169-987A	CLUTCH COVER - KTM 65cc (2009+)	1
24	170-005A	CLUTCH BASKET - KT65	1
27	178-045B	CENTER CLUTCH - CORE - KT65	1
47.1	411-130	FASTENER - M6 x 8 Super Low Head Socket Head Cap Screw	6
47.2	411-162A	FASTENER - M6 x 1.0 x 12mm Button Head Hex Screw, Stainl	2
47.3	411-180B	FASTENER - M6 x 1. x 18mm Button-Head Allen Screw, Zinc-	1
47.4	411-181A	FASTENER - M6 x 1.0 x 25mm Button-Head Hex Socket Scre	6
Not Shown	415-000	FASTENER - Quarter Turn Pin	2
51	415-000	FASTENER - Quarter Turn Pin	4
Not Shown	419-121	HARDWARE - 0.5 Black Free Play Gain Rubber Band	1
Not Shown	442-003	EXP ADJUSTMENT SPRING EXP - Heavy (Blue)	2
60	442-004	EXP ADJUSTMENT SPRING EXP - Super Heavy (Gold)	4
Not Shown	442-005B	EXP ADJUSTMENT SPRING EXP - 14LB (Green) Hot Formed	2

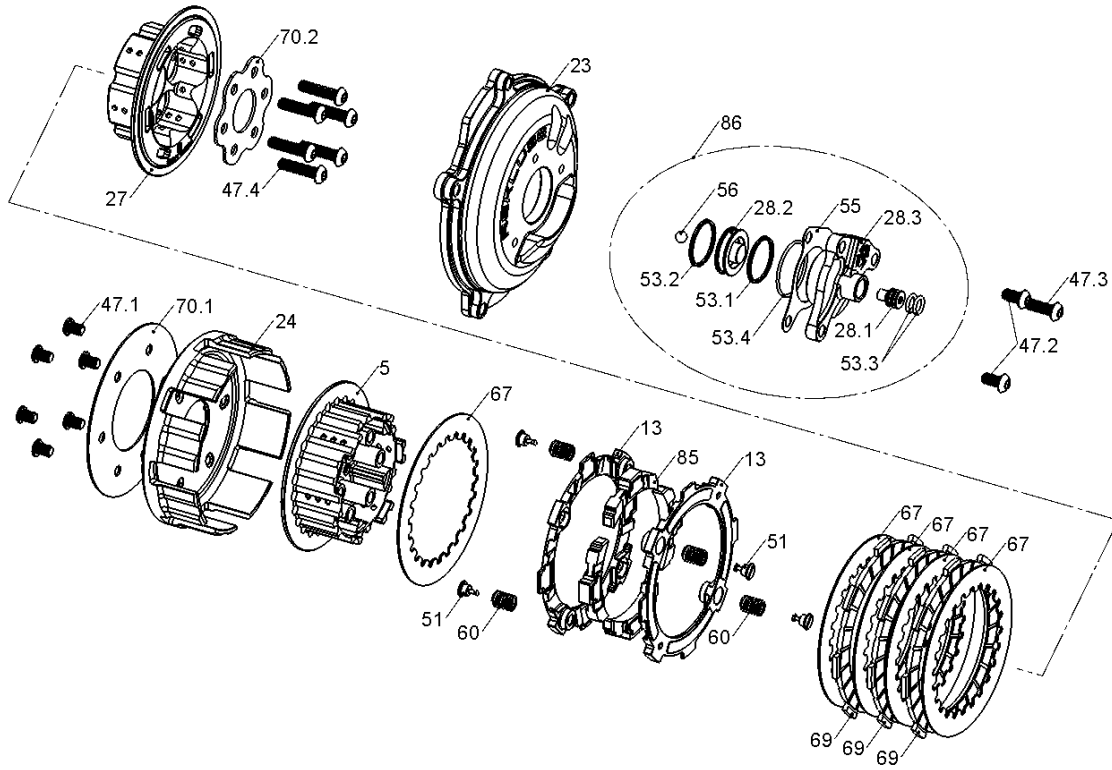
RMS-7790A - CORE EXP CLUTCH 3.0



**Item 95 | 185-100 | Slave cylinder piston installation taper tool (not included with product).
This is needed to rebuild the adjustable slave cylinder and re-insert slave cylinder piston.*

Item	Part Number	Item Description	Qty
67	465-414A	DRIVE PLATE - 0.040 CORE - KT65	5
69	469-691	FRICION DISC - K65 Friction Discs	3
70.1	471-005C	BASKET BACKING PLATE- KT65	1
70.2	471-007B	SPRING PUSH PLATE - KT65	1
70.3	471-114	DRILL - 1/4 SM Drill BIT	1
91	491-001	ADHESIVE - Loctite 243 .02 fl oz	1
85	741-027A	EXP 3.0 WEDGE ASSEMBLY - KT65 - Heavy	4
86	742-020A	ADJUSTABLE SLAVE ASSEMBLY - Formula 1/4 Ball 180-119 1	1
28.1	180-107	SLAVE CYLINDER ADJUSTER - KTM Adjustable Slave Cylinder	1
28.2	180-108	SLAVE CYLINDER PISTON - KTM Adjustable Slave Cylinder Pis	1
28.3	180-119B	Adjustable Slave Cylinder Housing - Formula	1
53.1	418-804	HARDWARE - 021 EPDM X Ring Black	1
53.2	418-805	HARDWARE - 021 Brown Viton X Ring	1
53.3	418-907	HARDWARE - 011 EPDM O Ring	2
53.4	418-915A	HARDWARE - BUNA O-ring, size 30mmID x 1.5mmW, Black	1

RMS-7790A - CORE EXP CLUTCH 3.0



**Item 95 | 185-100 | Slave cylinder piston installation taper tool (not included with product).
This is needed to rebuild the adjustable slave cylinder and re-insert slave cylinder piston.*

Item	Part Number	Item Description	Qty
Not Show	419-104	HARDWARE - 15 in L X 1/4OD. X .17ID. Clear Vinyl Tube	1
55	420-301A	GASKET - Slave Cylinder - Mag,Form - fits 180-100,-112,-119	1
56	431-304	BALL BEARING - 1/4 Balls - Throwout	1